



Connecting People & Cultures

**Welcome Pack
Guide de Bienvenue
2026**



WELCOME to FANS at KHPS !

A unique bilingual setting

For over 25 years, the French-speaking Association of the North Shore (FANS) has partnered with Killarney Heights Public School (KHPS) to promote and teach French language and culture in a unique bilingual setting.

Around 85% of the school population is enrolled in this unique French bilingual program, where students are learning the NSW Dept of Education curriculum in both languages.



Information correct as of September 2025

Thank you for trusting FANS with your child's bilingual education.

We are so happy to welcome you to our wonderful school community!

ABOUT THIS WELCOME PACK

Created by FANS for new members starting at Killarney Heights Public School, this welcome pack is designed to help prepare families to successfully embark on a new school journey.

You will find the following sections:

- About the FANS Bilingual Program
- Life at school
- Practical information
- Glossary
- Around the school



DEFINING THE SCHOOL

Main actors at KHPS



Killarney Heights Public School (KHPS)

A dynamic and growing primary school currently catering for a student population of nearly 700 students.

An inclusive, engaging and nurturing public school, its unique French bilingual program supports a diverse community.



French-speaking Association of the North Shore (FANS)

FANS delivers the French bilingual program at KHPS. In 2025, 557 students are enrolled across 27 classes through the school, representing around 85% of the student population. The bilingual program is taught by a team of 16 Teachers of French and 1 Kindy Teacher Assistant.



Killarney Heights Public School
P&C
UNIQUE SCHOOL AMAZING COMMUNITY

Parents & Citizens Association (P&C)

The P&C strengthens the ties between the school and the wider community, while providing resources to help ensure children receive the best education possible. All parents are invited to join the meetings each term, and help organise social and fundraising events.



FANS Bilingual Program

A unique education



What is FANS?

Founded over 25 years ago, FANS is a not-for-profit, parent-led association, overseen by an elected volunteer committee and managed by a dedicated staff team.

Our dynamic multicultural, multilingual community benefits from a modern French bilingual education within Killarney Heights Public School, while celebrating international Francophone cultures with inclusive events.

Our association's values are Personal Growth, Openness, Dynamism, Sharing, and Authenticity.

How it works

Students experience a unique bilingual learning model where the NSW curriculum is taught in both English and French.

- Two teachers, one class: Most classes are taught by a Department of Education classroom teacher and a FANS Teacher of French who work closely as a team.
- Small groups: Most classes have a lower student-to-teacher ratio, giving children more individual support and attention.
- Learning in both languages: Lessons take place in both languages—French lessons are taught in small groups in a dedicated learning zone located between two classrooms.
- Collaborative approach: Teachers take turns working with Francophone and Anglophone stream student groups, so every child learns both languages in meaningful ways.

The FANS model ensures that children are learning in two languages, while gaining the confidence to naturally switch between English and French in everyday school life.



FANS Bilingual Program

Francophone & **Anglophone streams**

FANS offers two distinct bilingual programs at KHPS

The Anglophone stream

is for students learning **French as a new language**, with little or no notions of French when starting school. Some children may already speak another language.

Whole school approach

Most classes at KHPS contain a mix of students in the Francophone stream, Anglophone stream, and English-first students who are not enrolled in the bilingual program.

The Francophone stream

is for students who already understand French when starting school. The program will help **sustain and grow their bilingualism** while attending a quality Australian public school.

Year 6 - DELF Prim' A1 or A2 exam

The DELF (Diplôme d'Études en Langue Française) is an internationally-recognised French language proficiency diploma.

Optional additional enrolment



FANS ECOSYSTEM

In the classroom...and beyond!

AAFEBS Partnerships

FANS & KHPS benefit from partnerships within the AAFEBS network — the **Australian Association of French-English Bilingual Schools**, including student exchanges, pen pals, school visits, sports competitions, teacher conferences, and common learning projects.

Collaborative learning projects:

- Lève ta voix reading aloud competition
- Faux-amis illustration competition
- Poetry recitation competition
- Rallye Lecture reading competition
- French Spelling Bee

KHPS - After school

L'Etude French Homework Club

Supervised by a FANS teacher, these small group sessions support children with their weekly French homework.

 Monday & Thursday

 3pm to 4pm


 Year 1 to 6

Le Petit Sportif

Fun, bilingual multi-sport classes. Coaches pick-up children at KHPS and walk to the KHHS hall for all-weather sessions.

 Monday, Tuesday & Thursday

 3:00pm to 4:45pm

 Kindy to Year 3

High School Classes

FANS can accompany your child's bilingual education through high school, with extra-curricular classes offered after school:

- **DELf Jr B1, B2 exam prep classes** - Students prepare to sit the different levels of the DELF exam (Diplôme d'Études en Langue Française), an official French language proficiency diploma. The DELF is valid for life and is recognised by universities and employers.
- **French History Workshop** - from the French Revolution, early French Republics, World Wars to Decolonisation.
- **L'Esprit Critique Workshop** - Studying world news & current affairs to develop critical thinking skills.



FANS Social Events

Community Gathering

FANS offers great community events and fundraisers throughout the year.

Family Events

- Sip & Chat Welcome Evening
- French book sales
- International Francophonie Week
- World Music Day - in partnership with the P&C
- Family Fun Day
- **French Market - major annual fundraiser**

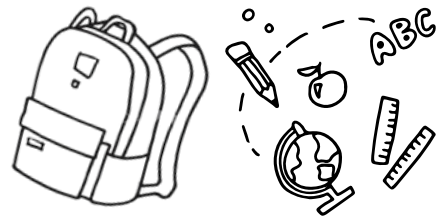
Parent events

- Raclette Party
- Trivia Night
- Card Games Night
- Dance Night



LIFE AT SCHOOL

A day at KHPS



8:30am

Teachers supervise
students on the school
grounds

11:00am

Recess for
30 minutes

1:00pm

Lunchtime
for 15 minutes

1:15pm

Playtime
for 30 minutes

3:00pm

End of school
day

9:00am

School starts

11:30am

Classes resume

1:45pm

Back to class

8:00 to 8:45am

FANS - Intensive French Before School

Francophone stream, from Year 1

Monday & Thursday

Compulsory class

Optional *Garderie* for Kindergarten siblings

Anglophone stream, from Year 1

Wednesday

Optional additional enrolment

3:00 to 4:00pm

FANS - L'Etude French Homework Club

Francophone stream, from Year 1

Monday & Thursday

Optional additional enrolment

Anglophone stream, from Year 3

Monday

Optional additional enrolment

3:00 to 4:45pm

**FANS - Le Petit Sportif
Bilingual Sports Classes**

All welcome, Kindy to Year 3
Monday, Tuesday, Thursday

Optional additional enrolment



LIFE AT SCHOOL

Meal breaks



Morning tea

11:00am

Eaten during morning recess, either packed in a lunch box or pre-ordered with the Canteen for pick-up.

Crunch & Sip

A set break in the classroom for all students to eat fresh vegetables and/or fruit.

Lunch 1:00-1:15pm

Pack a lunch box or place an order with the Canteen on the Flexischools app.

Children eat in their classroom.

Canteen

The **P&C** runs the school **canteen** 5 days a week, offering healthy meals, snacks and drinks. There is an on-site kitchen and pick-up counter. The Canteen does not have a specific eating space with tables and seating.

The canteen relies on volunteer helpers. The school regularly sends a sign-up link to all parents for those who can spare a few hours.

Orders are placed online only via the Flexischools app before 9:30am. Morning tea is picked up at the canteen, and lunch orders are delivered to the classroom by students.

FLEXISCHOOLS APP

Order from the Canteen via Flexischools before 9:30am for same-day purchases.

App Store - Google Play - www.flexischools.com.au



LIFE AT SCHOOL

Uniforms

Like most Australian schools, students at KHPS are expected to wear the school-approved uniform, including school hat and closed black shoes.

The summer uniform (Terms 1 & 4) and winter uniform (Terms 2 & 3) are worn three days per week, and a unisex sports uniform is worn two days per week.

The **Uniform Shop** carries the complete range of KHPS uniform items, excluding shoes, and also sells a range of donated second-hand items.

The shop is operated by the **P&C** and is run by two P&C staff and parent volunteers.



UNIFORM SHOP

Located behind the school office, the uniform shop opens three times weekly during school terms:

Monday & Wednesday, 8:00am to 9:30am

Thursday, 2:30pm to 4:00pm

Extended trading in November, December and January for Orientation/Kindergarten Fittings.

Parents can also order via the Flexischools app for delivery of items to your child's classroom: www.flexischools.com.au



LIFE AT SCHOOL

Starting Kindy

Best Start Assessment

Before the beginning of the school year, Kindergarten students complete a 30-minute, one-on-one *Best Start Assessment* with a Kindy teacher.

This assessment helps teachers learn about each child's skills and strengths in literacy and numeracy, to develop an appropriate program for each student.

No preparation is required.

Year 6 Buddy

Kindergarten students are paired with a Year 6 'buddy' on their first day of school. Buddies come over at recess and lunchbreaks to help kindergarten students with the school rules and act as role models.



COMFORT & CONNECT

On the first day at school, parents are invited to attend the Comfort & Connect morning tea after drop-off. This event is organised by the P&C to have a friendly chat and to welcome families into the school community.

This is a great opportunity to connect with other families who you will be getting to know very well over the next seven years at KHPS!



PRACTICAL INFO

Download the apps



Schoolzine

Essential communications from the school. Make sure to read the weekly Monday Bulletin, along with urgent posts, updates, Wellbeing Wednesday, etc.

Subscribe to your child's school year, class, and any other groups of interest.



Seesaw - KINDY ONLY

Teachers may use Seesaw in Kindy to share work, photos and messages with parents.



Sentral Parents

Report absences and access academic reports.



Flexischools

Online order for:

- Canteen - morning tea and lunch
- Uniforms
- Tickets for some school events

[App Store](#) - [Google Play](#)



SchoolBytes

Make school payments and give permission for students to attend excursions and incursions.



Facebook

- [FANS Sydney](#)
- [French Market](#)
- [KHPS](#)



Instagram

- [FANS Sydney](#)
- [French Market](#)
- [KHPS](#)



PRACTICAL INFO

School Days - Calendar 2026 *



*

Term 1

Monday 2 February to Thursday 2 April

Autumn holidays: Tuesday 7 April - Friday 17 April

Term 2

Wednesday 22 April to Friday 3 July

Winter holidays: Monday 6 July - Friday 17 July

Term 3

Tuesday 21 July to Friday 25 September

Spring holidays: Monday 28 September - Friday 9 October

Term 4

Tuesday 13 October to Thursday 17 December

Summer holidays: Fri 18 December 2026 - Wed 3 February 2027

Why don't Terms start on a Monday?

The first days of term are usually School Development Days (SDD).

Teachers and school staff attend professional learning sessions to improve their teaching skills and practices.

On these days, students are not to attend school and parents need to organise care for them.

At KHPS, vacation care is available on school grounds by external provider Camp Australia (starting 2026).

*Correct as of Sept 2025. Check for changes on the NSW Dept of Education website.



GLOSSARY

School terminology



ASSEMBLY

Students and teachers gather for school news, updates, reminders, and an awards ceremony. There are occasional performances by the school bands, strings, choirs, or dance troupes.

Assemblies take place on Fridays, for either the whole school or by stage (K-2, 3-6).

During the assembly, students sing the Australian national anthem and the bilingual KHPS song.

Presentation Day is a special assembly at the end of the school year, where some students receive special awards for their achievements.

AWARDS

Classroom teachers hand out certificates around the values of Success, Respect and Responsibility on a weekly basis. Students who earn six certificates are awarded a book prize.

One of the most sought-after awards is the Principal's Award. If a student obtains three, they are invited to attend the Principal's Morning Tea.

Special awards such as the Citizenship Award and Consistent Effort Award are given at the end of the year at the special assembly.

BALLS

Playing sport with balls is great fun. Before school, only handballs can be used from 8:30am.

Large balls (soccer, basketball, etc.) can be used on the oval and on the multipurpose court at recess and lunch time.

COLA

Covered Outdoor Learning Areas

There are two COLAs on the school grounds—at the Hall and in front of the music room (PAS).

EAL/D

English as an Additional language or Dialect.

EAL/D education operates as an integral part of the whole school curriculum.

Certain students may be required to attend EAL/D classes if they have little or no English language skills or prior schooling.

FRANCO, ANGLO & ENGLISH FIRST

Students in KHPS are referred as either Francophones, Anglophones or English First. Francophones and Anglophones are enrolled with FANS in the Francophone or the Anglophone stream. Most classes comprise those 3 groups.

GATES

The school has 3 gates to enter the grounds:

- Red Gate on Tramore Place
- Blue gate on Tralee Avenue
- Yellow Gate on Melwood Avenue

The Green Gate is used for canteen deliveries.

You may want to choose the gate closest to your child's classroom.



GLOSSARY

School terminology



HOUSES

The school assigns students to 4 different Houses. They will belong to the same house throughout their primary school years. Siblings are allocated to the same house.

Houses earn points allocated from student awards and sports competitions.

Each house has a different colour, and kids can wear their house's colour t-shirt during sports competitions.

KHPS Houses
Swift: **Green**
Yeats: **Blue**
Shaw: **Yellow**
Sheridan: **Red**

HPGE

The High Potential and Gifted Education (HPGE) Policy applies to all NSW public schools, teachers, and students.

This framework develops the talents of high potential and gifted students.

At KHPS, HPGE is currently offered through differentiation in class and through groups in key learning area such as French, Maths, Writing, Visual Arts, Robotics, Drama and Choir.

IFBS

Intensive French Before School

Intensive French (Français Intensif) lessons take place before school, with a focus on vocabulary and grammar.

Lessons are delivered by FANS teachers at KHPS:

Francophone stream students (compulsory) every Monday and Thursday, 8:00 to 8:45am

Anglophone stream students (optional) every Wednesday, 8:00 to 8:45am

These lessons are open to students from Years 1 to 6.

KHOSHC

Killarney Heights Outside School Hours Care (pronounced "Kooosh") is managed by an external provider on school grounds.

Primary OSHCare provides care for students before and after school, as well as during school holidays.

Parents can enrol with the service casually or on a regular basis.

Students can be dropped off from 7am and picked up until 6pm.

Please visit their website for more details regarding fees and registration.

KISS & DROP

The school favours Kiss & Drop at the gates to encourage child-centred play and student independence.

From 8:30am, teachers supervise the school grounds. Your child is in good hands, ready to have a fun day of social development and learning.

There are dedicated kiss & drop areas on Tralee Avenue (blue gate) and on Tramore Place (red gate).

Please respect the signage and road rules for everyone's safety.



GLOSSARY

School terminology



L'ETUDE

The French Homework Club is an optional after-school session where students can complete their FANS French homework under the supervision of a Teacher of French. Contact FANS to enrol.

LIBRARY

Students visit the school library once a fortnight for one hour during the school day. They must bring their library bag to borrow books in English or French.

Books need to be returned to borrow more.

The library is open at lunch for borrowing and activities.

LOTE

Language Other Than English is part of the curriculum. At KHPS, it is French for all classes.

MUFTI DAY

A day where the kids are allowed to wear clothes other than their school uniform. It is sometimes linked to a special event or a fundraiser, such as the World's Greatest Shave, Harmony Day, etc.

MUSIC PROGRAM

The P&C provides an extensive extra-curricular music program, including Strings ensembles and Bands. See the P&C website for more details.

NO HAT NO PLAY

Students are required to wear the school hat whenever they are outside their classroom, as part of the "no hat no play" Sun Safe policy.

Hats are available from the Uniform Shop and need to be labelled with the child's name.

PAS

The PAS (Performing Arts Space) is where students have weekly music or drama class. The classroom is used before and after school as a rehearsal space for the extra-curricular bands and strings programs.

P&C

The P&C Association is an integral part of the school, providing the canteen, uniform shop, extra-curricular bands and strings programs, instrument hire, and school events.

Funds are raised with events and by voluntary contributions on the school term invoice. The P&C works with the school to allocate funds to key priorities, such as new technology and improvements to the school, ie: laptops, signage, equipment, etc.

Parents are encouraged to attend online P&C meetings every term to be informed of ongoing and future projects.

PLAYGROUND EQUIPMENT

KHPS has separate outdoor equipment for each stage, and some blended play areas like the oval and the multipurpose courts.

The K-2 play equipment is beside the yellow gate, and the Year 3-6 play equipment (aka AusPlay) is behind the canteen.

The equipment, oval and paved school yards are all used during recess and after lunch.

Running is not permitted on the pavement, and the playground equipment is out of bounds outside of school hours.



GLOSSARY

School terminology



PSSA

Primary School Sports Association (PSSA) is an inter-schools sports competition throughout the year.

Students from Years 4-6 trial for a range of sports and compete on Friday mornings during school hours against other zone group schools. Weekly trainings are held before school for most sports.

READERS

These books are adapted to a child's reading level, in French and English, and are assigned as weekly homework from Kindy to Year 2. Readers are designed to improve fluency and foster a love of reading.

RECESS

Recess takes place from 11:00-11:30am in the schoolyard.

In case of rain, students stay in their classroom.

During recess, students may eat their morning tea.

REPORTS

Assessments are part of a teacher's daily practice as they monitor and record student progress.

The school lodges two electronic reports each year—at the end of Term 2 and the end of Term 4.

Reports are available from the Sentral parent portal.

SCRIPTURE AND ETHICS

Scripture or Special Religious Education (SRE) provides 30 minutes of special religious education per week in all NSW public schools. Parents complete a form to choose from the following at enrolment: Protestant, Catholic, Judaism, Baha'i or Buddhism.

Alternatively, families can select **Special Education in Ethics (SEE)**.

All SRE and SEE sessions are delivered by volunteers and may not always be available depending on staffing.

SPRINGFEST

The whole school participates in this biennial event, which takes place over several evenings in September. Each class performs in front of carers and family.

Not to be missed, as it's an important and fun event for all!

STAGES & YEARS

In a primary school, students move through 4 Stages of learning.

- Early Stage 1 (ES1): Kindergarten
- Stage 1: Years 1 & 2
- Stage 2: Years 3 & 4
- Stage 3: Years 5 & 6

School communications can refer to Years or Stages.



AFTER SCHOOL

Local after-school activities

Non-exhaustive list

Chess

[Sydney Academy of Chess](#)

Music Lessons

[JAM](#)

Coding

[Code2Make](#)

Visual Art

[Art & Soul Kids Studio](#)

Piano

[ISM](#)

Craft & Activities

[La French Academy](#)

Literacy tutoring

[Literacy Circle](#)

Maths tutoring

[Maths Ready](#)

[Girl Guides](#)

[Scouts Group](#)

[Netball](#)

[Forest Netball Club](#)

Soccer

[EKFC](#)

[Dance](#)

[Vibe Dance Studios](#)

Tennis

[Forestville Tennis](#)

Rugby

[Forest Rugby](#)

Karate

[Kick Fitness Group](#)

Swimming

[Carlisle](#)

KHOSHC

Before & After School
Care Provider

[Primary OSHCare](#)

Bilingual Multi-Sports

[Le Petit Sportif](#)

L'Etude

French Homework Club

[FANS](#)



CONTACTS

Stay in touch



**Bienvenue
to this great school
and wonderful
community!**

FANS email

info@fanssydney.org

FANS website

<https://www.fanssydney.org>

FANS WhatsApp



KHPS website

<http://killarneyh-p.schools.nsw.gov.au>

P&C WhatsApp



P&C website

<http://khps-pc.com.au>

Social media



[FANS page](https://www.facebook.com/FANSSYDNEY)

www.facebook.com/FANSSYDNEY

[FANS member group](https://www.facebook.com/groups/fansmembers)

www.facebook.com/groups/fansmembers



[FANS profile](https://www.instagram.com/fansbilinguesydney)

www.instagram.com/fansbilinguesydney

[KHPS Facebook Page](https://www.facebook.com/KillarneyHeightsPublicSchool)

www.facebook.com/KillarneyHeightsPublicSchool





FANS

Connecting People & Cultures