



FANS

Connecting People & Cultures



**Welcome Pack
Guide de Bienvenue
2025**

WELCOME

to FANS at KHPS !

For 25 years, the French-speaking Association of the North Shore (FANS) has partnered with Killarney Heights Public School (KHPS) to promote and teach the French language and culture in a unique bilingual setting.



Information correct as of September 2024

ABOUT THIS WELCOME PACK

Created by FANS for all of our new members starting at Killarney Heights Public School, this pack is designed to help families find relevant information regarding their new school journey.

You will find several sections:

- Life at school
- Practical information
- FANS
- Glossary
- Around the school

We are so happy to welcome you to our wonderful school community!



3 MAIN ACTORS at KHPS

Defining the school



Killarney Heights Public School (KHPS)

A dynamic and growing primary school currently catering for a student population of almost 700 students.

An inclusive, engaging and nurturing public school, its unique French-English bilingual program supports a diverse community.



Parents & Citizens Association (P&C)

The P&C strengthens the ties between the school and the wider community, while providing resources to help ensure children receive the best education possible. All parents are invited to join the regular meetings and help put on social and fundraising events.



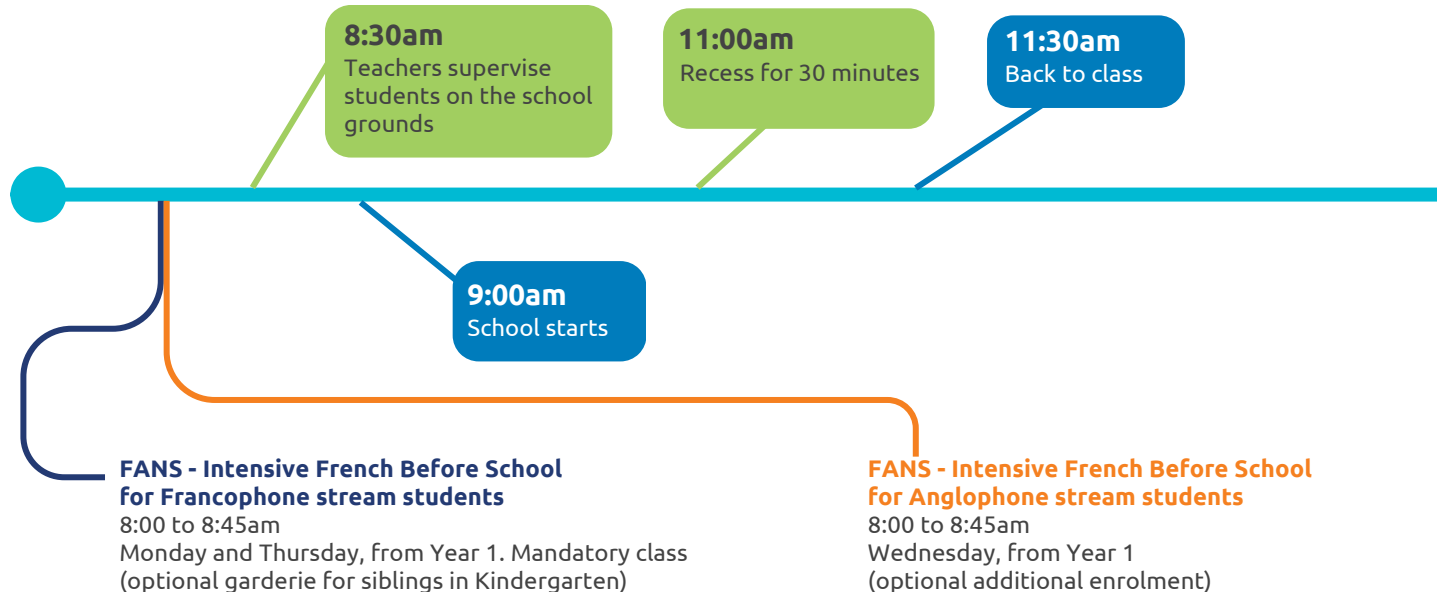
French-speaking Association of the North Shore (FANS)

FANS manages the French bilingual program at KHPS. In 2024, 85% of the student population is enrolled: 240 Francophone and 340 Anglophone stream students across 27 bilingual classes. FANS employs 13 qualified, native French-speaking teachers to deliver the bilingual program.



LIFE AT SCHOOL

A day at KHPS



LIFE AT SCHOOL

A day at KHPS

1:00pm

Lunchtime
for 15 minutes

1:45pm

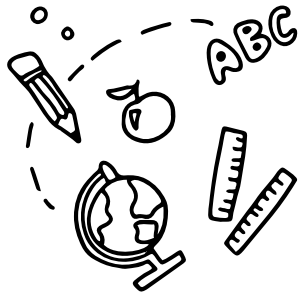
Back to class

3:00pm

End of school day

1:15pm

Playtime
for 30 minutes



FANS

L'Etude / French homework club

3:00 to 4:00pm

Monday and Thursday, from Year 1
(optional additional enrolment)



LIFE AT SCHOOL

Meal breaks



Morning tea

Eaten during recess, either packed in a lunch box or pre-ordered with the Canteen for pick-up.

Crunch & Sip

A set break in the classroom for all students to eat fresh vegetables and/or fruit.

Lunch

Pack a lunch box or place an order with the Canteen on the Flexischools app. Children eat outside in the schoolyard, or in their classroom if it's raining.

Canteen

The **P&C** runs the school **Canteen** 5 days a week, offering healthy meals, snacks and drinks. There is an on-site kitchen and pick-up counter. The Canteen is not a specific room with tables and seating.

The Canteen relies on volunteer helpers. The school regularly sends a sign-up link to all parents for those who can spare a few hours.

Orders are online only via Flexischools app and must be placed before 9:30am. Morning tea is to be picked up at the canteen and lunch orders are delivered to the classroom.

FLEXISCHOOLS APP

Order from the Canteen via Flexischools before 9:30am for same-day purchases.

App Store - Google Play - www.flexischools.com.au



LIFE AT SCHOOL

Uniforms

The **Uniform Shop** is operated by the **P&C** and is run by a manager and a group of volunteers.

All students who attend KHPS are expected to wear the school-approved uniform including school hat and closed black shoes.

The Uniform Shop carries the complete range of KHPS uniform requirements (excluding shoes), plus a variety of extras and has a great selection of second-hand items.

Contact the school if you would like to volunteer!

Terms 1 and 4, students wear the summer uniform.



Terms 2 and 3, students wear the winter uniform.



UNIFORM SHOP

Located on school grounds, the uniform shop opens 3 times a week during school terms: Monday from 8:00am to 9:30am, and Wednesday from 8:00am to 9:30am and from 2:30 to 4:00pm. It also usually opens the Saturday before a school term resumes.

You can also order via the Flexischools app for delivery of items to your child's classroom: www.flexischools.com.au



LIFE AT SCHOOL

Kindy

Best Start Assessment

Before the beginning of their school year, Kindergarten students are allocated a half hour time slot to complete a one-on-one *Best Start Assessment* with one of the Kindy teachers.

The Best Start Kindergarten Assessment is a tool to help teachers learn about each child's skills and strengths.

Teachers will assess children's early literacy and numeracy skills so that they can develop an appropriate teaching program catered for the child. No preparation is required.

Buddy

Kindergarten students are paired with a Year 6 'buddy' on their first day of school. Buddies come over at recess and lunchbreaks to help kindergarten students with the school rules and good practices.

COMFORT & CONNECT

On their first day at school, Kindy students are dropped off to their classroom and parents are invited to attend an event called

'Comfort & Connect'

This morning tea is organised by volunteer parents in order to have a friendly chat and feel welcome into the school community.

This event is a great opportunity to connect with other families who you will be getting to know very well over the next seven years at KHPS!



PRACTICAL INFO

Download the apps



Schoolzine

For essential information from the school: newsletters, urgent posts, Wellbeing Wednesday, etc. Make sure you subscribe to the Bulletin, your child's school year, and any other topic of interest to you: [Schoolzine](#)



Seesaw - KINDY ONLY

Teachers may use Seesaw in Kindy to share work, photos and messages with parents.



Sentral Parents

This app is used to report absences and access the semester's reports.



Flexischools

Online order for:

- Canteen (morning tea and lunch)
- Uniforms
- Tickets for some school events

[App Store](#) - [Google Play](#)



SchoolBytes

KHPS uses SchoolBytes for parents to pay for and give permissions for students to attend excursions and incursions. It is also where school fees are paid.



Facebook
[FANS Sydney](#)
[French Market](#)
[KHPS](#)



Instagram
[FANS Sydney](#)
[French Market](#)
[KHPS](#)



PRACTICAL INFO

School Terms - Calendar 2025



Term 1

Thursday 6 February to Friday 11 April
Autumn holidays: Monday 14 April - Tuesday 29 April

Term 2

Wednesday 30 April to Friday 4 July
Winter holidays: Monday 7 July - Friday 18 July

Term 3

Tuesday 22 July to Friday 26 September
Spring holidays: Monday 29 September - Friday 10 October

Term 4

Tuesday 14 October to Friday 19 December
Summer holidays: Saturday 20 December - Monday 26 January 2026



Why don't Terms start on a Monday?

The first days of term are usually School Development Days (SDD).

Teachers and school staff attend professional learning sessions to improve their teaching skills and practices.

On these days, students are not to attend school and parents need to organise care for them.

At KHPS, vacation care is available on school grounds via [Primary OSHCare](#) (KHOSHCH).



FANS Bilingual Program

Why a bilingual education?



What is FANS?

Founded 25 years ago, FANS (French-speaking Association of the North Shore) is a not-for-profit association, overseen by an elected parent committee and managed by a dedicated staff team.

Our dynamic multicultural, multilingual community benefits from a modern French-English bilingual education within Killarney Heights Public School, while celebrating international francophone cultures with inclusive events.

Our association's values are Personal Growth, Openness, Dynamism, Sharing, and Authenticity.

A unique bilingual setting

Around **85% of the school** population is enrolled in this unique bilingual program, where students are following the NSW school curriculum and school calendar, and are learning in both languages.

In the classroom

Each class is taught **collaboratively**, with both Department of Education teachers and qualified FANS native-speaking teachers of French working as a team.

The French lessons are conducted with **small groups of students**, alternating between students in the

Francophone stream or students in the Anglophone stream, in a special, **separate learning zone** located between two classrooms.

Having two teachers delivering the curriculum for one class results in a beneficial **low student to teacher ratio** in most classes.



FANS Bilingual Program

Francophone or Anglophone stream

FANS offers two distinct bilingual programs.

For students learning
French as a new language,
with little or no notions of
French when starting school,
but who may already speak
another language:
the Anglophone stream

The Francophone stream
is for students who fully
understand French when
starting school, and will help
sustain their bilingualism in
French while in an Australian
public school.

Whole school approach

Most classes at KHPS contain
a mix of students enrolled in
the Francophone stream and
the Anglophone stream,
along with English-first
students (who are not
enrolled in the FANS
bilingual program).



FANS Social Events

Community Gathering

FANS offers great community events and fundraisers throughout the year.

Family Events

- Sip & Chat Welcome & Info Evening
- French book sale
- National Francophonie Days gathering
- World Music Day (in partnership with the P&C)
- Family Fun Day
- **French Market**

Parent events

- Raclette Party
- Trivia Night
- Card Games Night
- Dance Night



FANS FRENCH MARKET

Sunday in November
9am to 4pm at KHPS



GLOSSARY

School terminology



ASSEMBLY

Students and teachers gather in the hall where school news, updates and reminders are given to students, and where awards are announced. There are sometimes performances by the school bands, strings and choirs.

Assemblies take place on Fridays, for either the whole school or by stage (K-2, 3-6).

During the assembly, students sing the Australian national anthem and the bilingual school song.

Presentation Day is a special assembly at the end of the school year, where some students receive special awards for their achievements.

AWARDS

Classroom teachers hand out certificates around the values of success, respect and responsibility on a weekly basis. Students who get six certificates are offered a book.

One of the most sought-after awards is the Principal's Award.

If a student obtains 3, they are invited to the Principal's Morning Tea.

Special awards such as the Citizenship Award and Consistent Effort Award are given at the end of the year at the special assembly.

BALLS

Playing sport with balls is great fun. Before school, only handballs can be used from 8:30am.

Large balls (soccer, basketball, etc.) can be used on the oval and on the multipurpose court at recess and lunch time.

COLA

Covered Outdoor Learning Areas

There are two on the school grounds.

EAL/D

English as an Additional language or Dialect.

EAL/D education operates as an integral part of the whole school curriculum.

Certain students may be required to attend EAL/D classes if they have little or no English language skills or prior schooling.

FRANCO, ANGLO & ENGLISH FIRST

Students in KHPS are referred as either Francophones, Anglophones or English First. Francophones and Anglophones are enrolled with FANS in the Francophone or the Anglophone stream. Most classes comprise those 3 groups.

GATES

The school has 3 gates to enter the grounds:

- Red Gate on Tramore Place
- Blue gate on Tralee Avenue
- Yellow Gate on Melwood Avenue

There is also a Green Gate which is rarely used.

You can enter via any gates, but you may want to choose the one closest to your child's classroom.



GLOSSARY

School terminology



HOUSES

The school assigns students to 4 different sport houses. They will belong to the same house throughout their primary school years. Siblings are all allocated to the same house.

each house has a different colour, and during yearly competitions, kids will be asked to wear a t-shirt of their specific house colour.

Houses are:
Swift: green
Yeats: blue
Shaw: yellow
Sheridan: red

HPGE

High Potential and Gifted Education

The High Potential and Gifted Education Policy applies to all NSW public schools, teachers, and students.

This framework develops the talents of high potential and gifted students.

At KHPS, HPGE is currently offered through differentiation in class and through groups in key learning area such as French, Maths, Writing, Arts, Robotics, etc.

IFBS

Intensive French Before School

Intensive French (Français Intensif) lessons take place before school, with a focus on vocabulary and grammar.

These lessons are delivered by FANS teachers for Francophones (mandatory) every Monday and Thursday, 8:00 to 8:45am; and Anglophones (optional) on Wednesdays from 8:00 to 8:45am.

These lessons are open to students from Year 1-6.

KHOSHC

KHOSHC (pronounced koosh) means Killarney Heights Outside School Hours Care. It is an external provider that offers before and after-school care on KHPS grounds.

You can use their service causally or on a regular basis.

Students can be dropped off at 7am and picked up at 6pm to accommodate parents.

Please visit their website for more details regarding fees and registration.

[Khoshc](#)

KISS & DROP at school

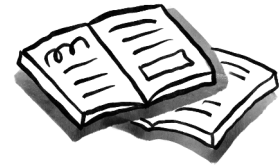
The school favours Kiss & Drop at the gates to encourage child-centred play and student independence.

From 8:30am, teachers supervise the school grounds. Your child is in good hands, ready to have a fun day of social development and learning.



GLOSSARY

School terminology



KISS & DROP on roads

There are dedicated kiss and drop areas on Tralee Avenue (blue gate) and on Tramore Place (red gate).

Please respect the road rules for the safety of all children .

L'ETUDE

Also known as French Homework Club, this is an after-school session where students can do their FANS French homework under the supervision of a teacher of French. Ask FANS for more details and to enrol.

LIBRARY

Students visit the school library once a fortnight for one hour as part of the school day. They are asked to bring their library bag to borrow books in English or French. The number of books varies according to their grade.

Books need to be returned to allow children to borrow more.

The library is open at lunch for borrowing and activities (Lego®, drawing, reading).

LOTE

Language Other Than English is part of the curriculum. At KHPS, it is French for all classes.

MUFTI DAY

A day where the kids are allowed to wear clothes other than their school uniform. It is sometimes linked to a special event or a fundraiser, such as the World's Greatest Shave, Harmony Day, etc.

NO HAT NO PLAY

Students are required to wear their school hat whenever they are outside their classroom, as part of the "no hat no play" policy. Only school hats are allowed.

Hats are available at the Uniform Shop and need to be labelled with the child's name.

P&C

The P&C Association is an integral part of the school, providing core services (canteen, uniform shop, music program and instrument hire) and events for parents and students by collecting voluntary contributions per child every term.

P&C meetings take place on week 5 of each term. Parents are encouraged to attend in order to be informed of ongoing and future school and community projects.

PLAYGROUND EQUIPMENT

Students have access to multiple play areas and equipment.

There is a multipurpose court and K-2 play equipment, as well as a Year 3-6 play equipment (also referred to as AusPlay).

The equipment, the Oval and the concrete school yards are all used during recess and after lunch.

Running is not permitted on concrete yards, and the playground equipment is out of bounds outside of school hours.



GLOSSARY

School terminology



READERS

These books are adapted to your child's reading level, in French and English, handed out as weekly homework in Kindy to Year 2. Readers are designed to improve fluency and foster a love of reading in young readers.

RECESS

Recess takes place at 11:00am.

This is a 30-minute playtime every morning in the schoolyard, unless it's raining and students then remain in the classroom.

During recess, students may eat their morning tea.

REPORTS

Assessment is part of teachers' daily practice. They monitor and record students' progress.

The school lodges an electronic school report at the end of Term 2 and the end of Term 4 - one per semester.

The reports are available to read and download from the Sentral Parent portal.

SCRIPTURE AND ETHICS

Scripture or Special Religious Education (SRE)

30 minutes of special religious education per week in all NSW public schools. Parents complete a form to choose from the following at enrolment: Protestant, Catholic, Baha'i or Buddhism.

Alternatively, you can select **Special Education in Ethics (SEE)**.

All SRE and SEE are delivered by volunteers and may not always be available depending on staffing.

SPRINGFEST

The whole school participates in this biennial event, which takes place over several evenings in September. Each class performs in front of carers and family.

Not to be missed, as it's an important and fun event for all!

STAGES & YEARS

In a primary school, students move through 4 Stages of learning.

- Early Stage 1 (ES1) is Kindergarten
- Stage 1: Year 1 and Year 2
- Stage 2: Year 3 and Year 4
- Stage 3: Year 5 and Year 6

School communications might refer to Years or Stages.



AROUND THE SCHOOL

Local after-school activities

Non-exhaustive list

Chess

[Sydney Academy of Chess](#)

Music Lessons

[JAM](#)

Coding

[Code2Make](#)

Art

[Art & Soul Kids Studio](#)

Piano

[ISM](#)

Craft & Activities

[The French Academy](#)

Literacy tutoring

[Literacy Circle](#)

Maths tutoring

[Maths Ready](#)

Netball

[Forest Netball Club](#)

Athletics

[Athletes' Corner](#)

Karate

[Kick Fitness Group](#)

Soccer

[FKFC](#)

Dance

[Vibe Dance Studios](#)

Swimming

[Carlile](#)

Girl Guides

Scouts Group

Sports - various

[Le Petit Sportif](#)

Rugby

[Forest Rugby](#)

Tennis

[Forestville Tennis](#)

KHOSHC
Before & After School
Care Provider
[Primary OSH Care](#)

**L'Etude/
French Homework Club**
[FANS](#)



AROUND THE SCHOOL

Get in touch

**Bienvenue
to this great school
and wonderful
community!**



FANS email

info@fanssydney.org



FANS website

<https://www.fanssydney.org>

KHPS website

<https://killarneyh-p.schools.nsw.gov.au>

Social media



[FANS Facebook Page](https://www.facebook.com/FANSSYDNEY)

www.facebook.com/FANSSYDNEY

[FANS member Facebook group](https://www.facebook.com/groups/fansmembers)

www.facebook.com/groups/fansmembers



[FANS Instagram](https://www.instagram.com/fansbilinguesydney)

www.instagram.com/fansbilinguesydney

[KHPS Facebook Page](https://www.facebook.com/KillarneyHeightsPublicSchool)

www.facebook.com/KillarneyHeightsPublicSchool





FANS

Connecting People & Cultures